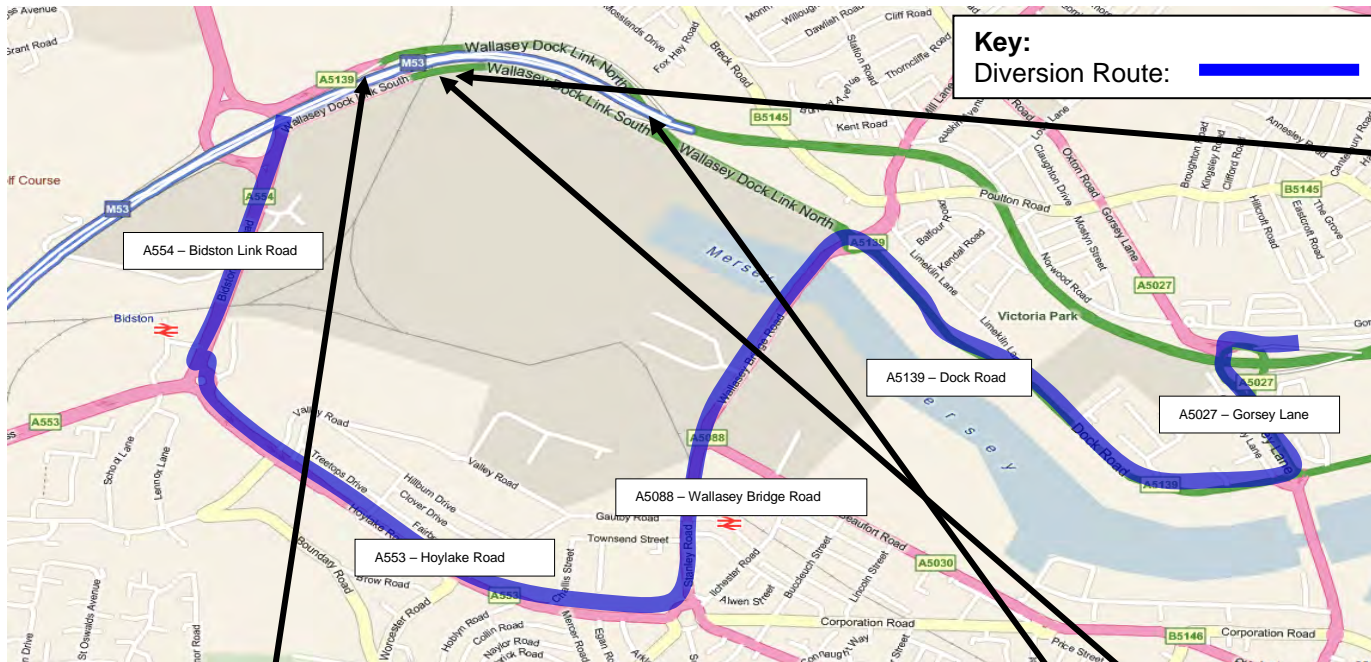


Traffic Management - Diversion Route



During the works, traffic in both directions will be diverted via Gorse Lane, Dock Road, Wallasey Bridge Road, Stanley Road Hoylake Road and Bidston Link to M53 J1 with access to the Mersey Tunnel, Kingsway, limited during the works period.



Road Closures

Phase 1 – 31st May 2011 – 14th July 2011

Phase 2 – 15th July 2011 – 11th August 2011

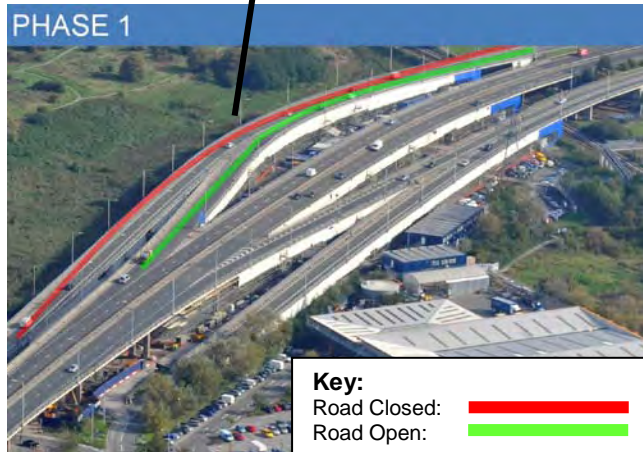
Phase 3 – 12th August 2011 – 29th September 2011

Phase 4 – 30th September 2011 – 25th October 2011

These are proposed dates and the phases of work may be subject to change as works progress. Up-to-date information will be provided on the Highways Agency's website:

<http://www.highways.gov.uk/roads/projects/5860.aspx>

Please check this before any travelling arrangement are made



Sherlock Lane footbridge renewal

During Phase 1 the tunnel approach road will be closed over two weekends between 20:00 Saturday and 00:00 Sunday to remove and reinstate the footbridge. Merseytravel will keep the travelling public informed via their website and the Mersey Tunnels information line

www.merseytravel.gov.uk

0151 236 8602 – Option 1



The project team would like to take this opportunity to thank you for your co-operation and understanding whilst crucial construction is taking place on and around the viaduct. We will endeavour to keep disruption to local traffic, the environment and local residents to a minimum at all times.

We would urge you to take care and adhere to the speed limits currently placed on the Bidston Moss roundabout at 30mph and 50mph on the main carriageway of the viaduct including slip-roads. The speed limits are in place for the safety of travelling public and our workforce.



0800 783 1423

www.ccscheme.org.uk

The considerate constructor's scheme is a national initiative, set-up by the construction industry in 1997 to improve its image. It operates a voluntary set of site and company codes of considerate practice, with which participating construction companies and sites register



Got a question or comment?

0300 123 5000

E-mail: ha_info@highways.gsi.gov.uk
24 hours a day, 365 days a year

Live traffic information

08700 660 115

www.highways.gov.uk
24 hours a day, 365 days a year

Want to contact the project directly?

Contact: Theresa Winter, Costain Public Relations on:

0151 346 8074

We are committed to responding within 24 hours

Calls from landlines to 08700, 0300 and 0151 numbers can incur extra charges but are free from some providers; mobiles usually cost more. Please check costs with your service provider

Driving through
roadworks



If you do have to drive through roadworks, please take extra care.

- Keep to the speed limit – it's there for your safety
- Get into the correct lane in good time – don't keep switching
- Concentrate on the road ahead, not on the roadworks
- Be alert for works traffic leaving or entering roadworks
- Keep a safe distance – there could be queues in front
- Observe all signs – they're there to help you

Remember that tiredness can kill. Take regular breaks from driving.



M53 Bidston Moss Viaduct Strengthening



Traffic Information

As part of the M53 Bidston Moss Viaduct Improvement scheme, road users are being advised of a series of road closures around Junction 1 of the M53 as work continues on the project.

The improvements to the viaduct will lift the current weight restrictions, help to reduce congestion, and improve lighting and drainage.

The next phase of the work will begin on 31st May 2011 and will see bridge deck repairs, kerb drainage and bridge joint work being undertaken. The completion dates for the works is Spring 2012.